

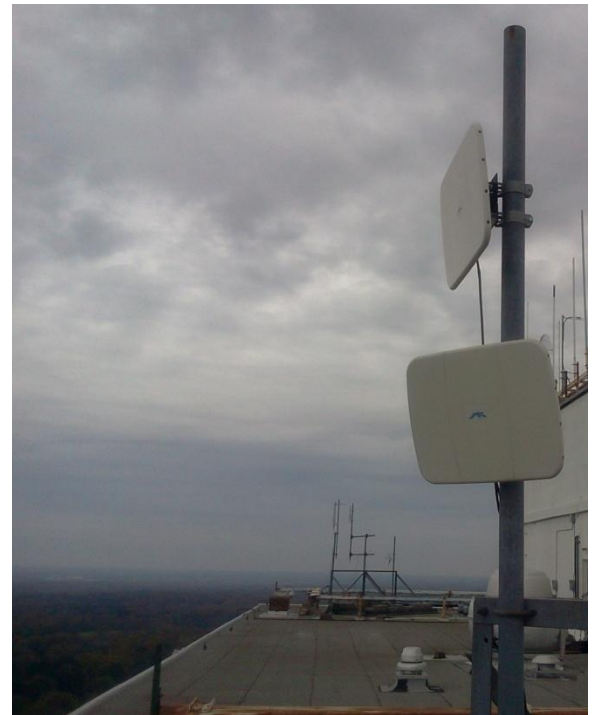


To be effective in today's law enforcement environment, you must be able to deploy video, acoustic and environmental sensing equipment in any location where the crime is committed. Many of these areas are often remote and secluded making traditional communication channels that feed data to a real-time crime center impossible. At SkyCOP®, we have leveraged our technical know-how and have developed a communication platform that makes data feeds from any location possible and cost-feasible. You can therefore move your security surveillance efforts to anywhere and stay ahead of the criminal element in your community.

Radios on Memphis Housing Tower in Downtown Memphis, TN

The SkyCOP® communications technology is the backbone in connecting all SkyCOP® surveillance products such as SkyCOP® Mobile License Plate Recognition units, SkyCOP® Enclosure units, and SkyCOP® Mobile Surveillance Trailers. All of these systems in combination can provide remote wireless video, acoustic and other data feeds to your command center using any SkyCOP® offering. As such, your organization or agency can monitor and record activities across thousands of SkyCOP® locations using a single network.

The SkyCOP® communications platform allows for unlimited expandability to multiple cameras and sensing devices that greatly increase your ability to conduct complete and total environmental surveillance. You will see increased public safety and crime detection since options using communications technology allow you to place surveillance monitoring equipment in crime hot zones. Our advanced technology increases responsiveness and leads to greater arrest and conviction rates.



Radios on Clark Tower in Memphis, TN

SkyCop Wireless Communication

The Team at SkyCop® developed several network interface options to allow you to communicate effectively within your intelligence-led policing initiative as the following:

Wireless Communications Technologies

- Utilizes 900 MHz, 2.4 GHz, and 5.8 GHz frequencies.
- Serves both stand-alone access point and mesh gate-way or repeater.
- Bandwidth management, firewall, and VPN.
- Encrypted client traffic using Blowfish.
- VPN client-to-node security.
- Voice over IP SIP Gateway.
- Wired or wireless NAT, DNS, and DHCP client services.
- AODV and WDS based mesh routing.
- Built in support for VPN.
- Adjustable RF output, 1 Mw up to 700 Mw.
- Complete management via GUI, VPN, and SSH.

GSM EVDO Cell and Satellite Communications

- CDMA Compatible
- EVDO (Evolution Data Optimized) for broadband data transmissions.
- Verizon EVDO Rev A has been tested and is available for SkyCop® applications.
- Tested & available for all major carrier's data cards.

Satellite Communications

- Hughesnet compatible 500kbps upload speed.
- MotoSAT DataStorm automatic satellite tracking compatible.

